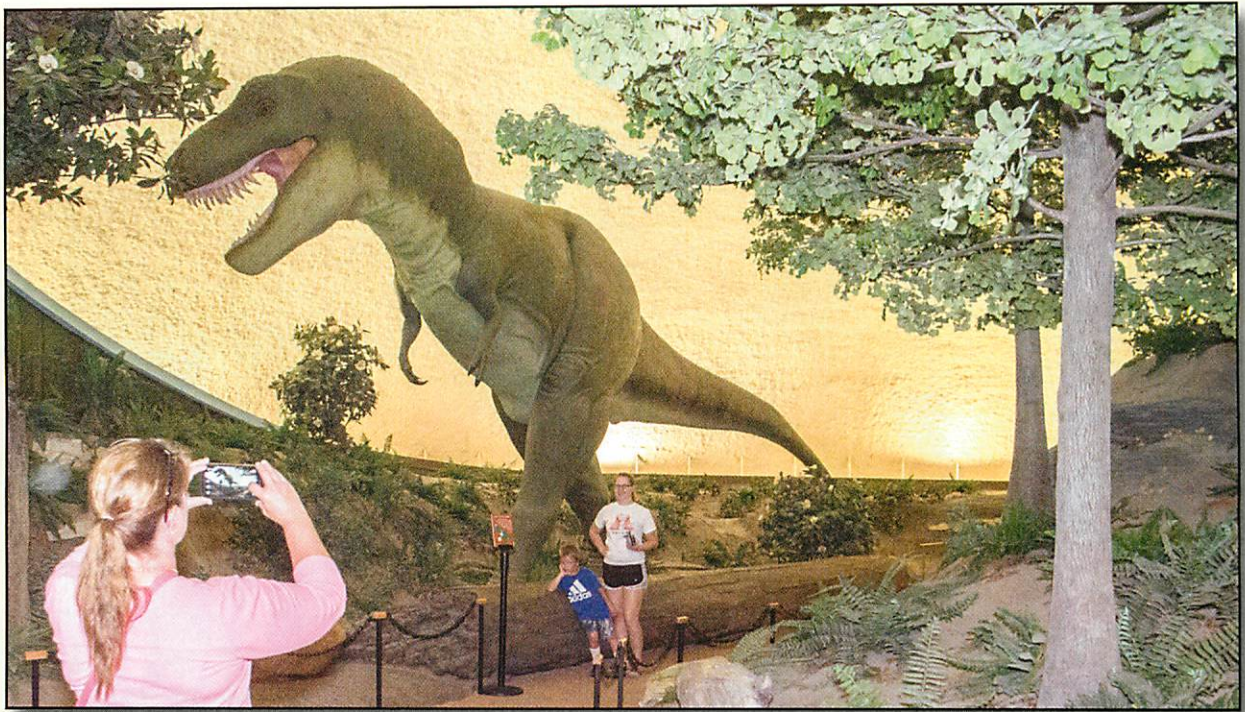
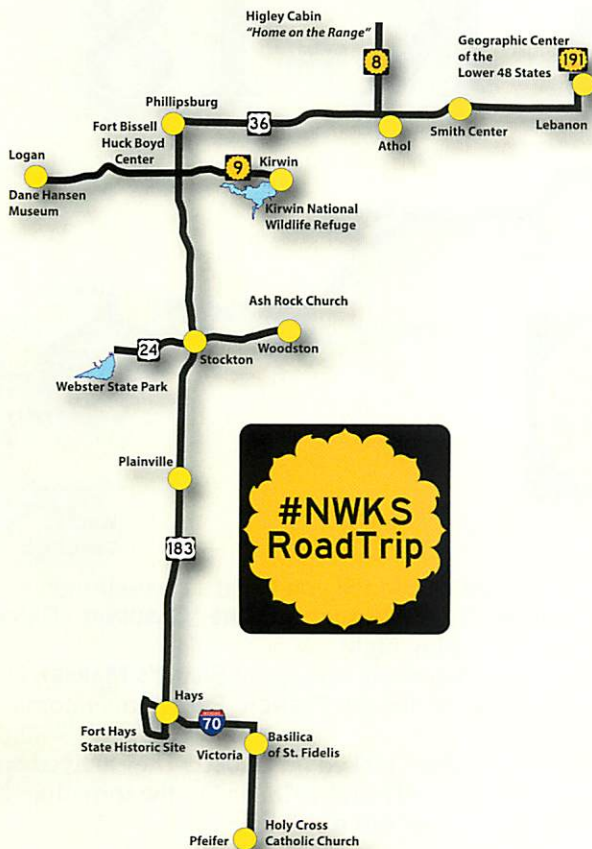


The Cretaceous period meets the 21st Century at **Sternberg Museum**, Hays.



# FORT to FORT

## Fort Hays to Fort Bissell & beyond



From Ellis County in the southwest to Smith County in the northeast, the Fort to Fort Road Trip offers something for everyone. Find outdoor fun, history, architecture and more.

For history buffs, return to the settlement period at Phillipsburg's **FORT BISSELL** and at **FORT HAYS STATE HISTORIC SITE**. While in Hays, walk in famous footsteps in the **HISTORICAL DOWNTOWN HAYS WALKING TOUR**.

Dinosaur buff? Roar with a T-rex at **STERNBERG MUSEUM**, Hays.

Love the outdoors? **WEBSTER STATE PARK** is a prime place for water sports, fishing and camping. Bowhunt or watch eagles at **KIRWIN NATIONAL WILDLIFE REFUGE**.

Love architecture? Tour spectacular **BASILICA OF ST. FIDELIS**, Victoria; and **HOLY CROSS CATHOLIC CHURCH**, Pfeifer. **ASH ROCK CHURCH** near Woodston was made of Fort Hays Limestone.

Love art? See the exhibits at **DANE G. HANSEN MUSEUM**, Logan.

If you're a railfan, watch the fantastic O-scale **C&R RAILROAD** run through a mountain and a village before it arrives at Union Station in the **HUCK BOYD CENTER** in Phillipsburg.

Love music? Visit the **"HOME ON THE RANGE" CABIN** near Athol.

Like to be at the center of attention? Visit the **GEOGRAPHIC CENTER OF THE LOWER 48 STATES** near Lebanon.

**Hays website: [VisitHays.com](http://VisitHays.com)**

**Facebook and Twitter: @HaysCVB**

**Rooks County website: [RooksCounty.net](http://RooksCounty.net)**

**Phillips County website: [PhillipsCounty.org](http://PhillipsCounty.org)**

**Facebook: @ChamberandMainStreet**

**Smith County website:**

**[LoveSmallTownAmerica.com/SmithCountyKS.php](http://LoveSmallTownAmerica.com/SmithCountyKS.php)**